



GUANGZHOU DONGXING GIANT DRAGON  
STATIONERY & SPORTING GOODS CO.,LTD.

APT.2 NO.13 LONGZHU ROAD XINHUA TOWN HUADU GUANGZHOU CHINA  
TEL:0086-20-86977878 FAX:0086-20-86977701 PC:510800  
Http://www.giant-dragon.com E-mail:dongxing@giant-dragon.com



**GIANT DRAGON**

GUANGZHOU DONGXING GIANT DRAGON  
STATIONERY & SPORTING GOODS CO.,LTD.



The world Table Tennis champion Zhang Yi Ning

Ex-chairman of ITTF XuYinsheng, Ex-General Coach of Chinese National Table Tennis team Xu Shaofa. The former World Champion Jiang Jialiang have visited our company. They all give us precious opinions and strongly support.

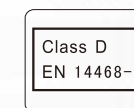
# INTRODUCTION OF COMPANY

GUANGZHOU DONGXING GIANT DRAGON STATIONERY & SPORTING GOODS CO.,LTD. was established in 1991. Our brand is GIANT DRAGON, now GIANT DRAGON products are enjoying a good sale in every district of the world. Through years of all staffs' effort, we have become one of the largest manufactures of table tennis equipment in China.

Our company owns nearly 60,000 square meters of standard workshops which can offer us enough production places and ensure our high throughput and also keep our fast delivery time. With group of experienced personnel who work in the factory for many years, we always guarantee quality of each product. We have kinds of professional product line for table tennis equipment.

We always follow the principle of quality first and dedicate to Good quality, Good innovation & Low price, we constantly manage to reach the most excellent quality. Some of our products have been approved by ITTF.

Our company is with enough production place, abundant strength and excellent professional personnel, together with excellent management, so that high quality products & excellent services will be constantly contributed to the development of the world sports project.





**【3M Technology for the 40+ plastic ball】**

- More spin
- More speed
- More tension



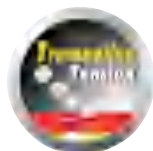
**【TR. Tension II Technology】**

Due to special process with TR.Tension II Technology the high polymer material be modified, which help the inner energy of the rubber and sponge improved considerably, in addition to the new high porous sponge increased stored energy to provide both better speed and spin.



**【Gecko Adsorption Technology】**

Due to the Gecko Adsorption Technology applied to the rubber surface, lots of mini osculum forms on the rubber surface, like gecko adsorption feature. It can retain the ball on the rubber for longer. You can control the speed and spin of the ball freely.



**【Trampoline Tension Technology】**

This kind of rubber is the new invention of Giant Dragon company, the unique Trampoline Tension Technology makes the rubber and sponge with high tension like trampoline, makes rubber can either absorb the attacking balls or spring it away! It is the type with inner energy and it's the best choice in the VOC-free glue period!



**【Factory Tuned Durable Tension Technology】**

The durable tension technology through the Factory Tuned to generate the durable tension: with the special technical developments, make the energy particle filling into the sponge micropores, and enlarged the micropores, taking the durable tension.



PERIL ANTI is a anti rubber designed for the new material 40+ ball, it can against all kinds of attack, return weird and threatening ball.

**【PERIL ANTI】**

Art.No.: 30-022

Spin	4
Speed	5.5
Thickness	1.2/1.8 mm



Using Giant Dragon's famous Trampoline Tension Technology this long pimples rubber gives devastating new variations to the defensive player. Thanks to this new technology & softer than usual pimples, Dragon Talon produces sensational back-spin from your opponents attacking shots. The tension rubber enables you to return the ball to your opponent at an uncomfortable speed whilst the softer but durable pimples accommodate the excellent control needed to achieve this.

**【DRAGON TALON NATIONAL TEAM】**

Art.No.: 30-012NT

Spin	8.5	Thickness	OX
Speed	5		



**【KARATE SOFT TURBO】**

Art.No.: 30-002ST

This new rubber is specially designed for 40+ New ball. Thanks to the technology of Trampoline Tension and Gecko Adsorption invented by Giant Dragon. With an appreciable improvement of speed and spin, it's not only suitable for the players in the world, but also feasible for enhancing the skill of the beginners and secondary players.

Spin	11.5
Speed	14
Thickness	1.7/1.9/2.1 mm





This long pips rubber is created with Trampoline Tension technology, which makes the pips elastic and more effective. With the pimple ratio at the very limit of ITTF regulations, provides for strong defense and dangerous reversals.

**【SNOWFLAKE】**

Art.No.: 30-013

Spin 8.3

Speed 4.8

Thickness OX / 0.9mm



This rubber can handle all kinds of difficult spins. This rubber's greatest ability is to significantly decrease the effect of an opponent's spin, and allow for offensive counterattack.

**【SOFT ANTI】**

Art.No.: 30-021

Spin 4

Speed 5.5

Thickness OX / 0.9 / 1.5mm



Giant Dragon Cropcircles is both an offensive and defensive long pips. On offense, it creates unexpected path and spin, destroying an opponent's rhythm. On defense it is bewildering, has excellent hand feel, and lets the user maintain very good control of the ball.

**【CROPCIRCLES】**

Art.No.: 30-014

Spin 6.5

Speed 5.5

Thickness OX / 1.2mm



ATTACK LONG is a long pip sheet that different from other long pips in the market. With a layer of textile at the back of the long pip sheet, plus a specially measured pip size, this long pip sheet makes ball return more aggressive and stable, destroying an opponent's attack.

**【ATTACK LONG】**

Art.No.: 30-017

Spin 5.5

Speed 6.5

Thickness OX



Introducing the new Giant Dragon Storm table tennis rubber, it is the combination of the "MET" and "TR. Tension II" tensor technologies. This rubber comes with a high tension sponge along with a very tacky top-sheet to reach the maximum of spin and speed. The Storm is a perfect weapon for players who seek to perform fast and spinny loop drives consistently during each game.

**【STORM SOFT】**

Art.No.: 30-019S

Spin 12

Speed 13.5

Hardness 38°

Thickness 1.7 / 1.9 / 2.1mm



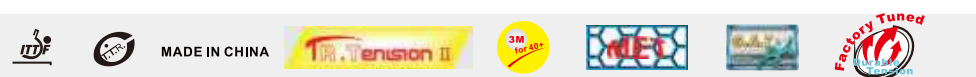
**【STORM NATIONAL TEAM】**

Art.No.: 30-019NT

Spin 12.25

Speed 13.75

Thickness 2.15mm



**【SUPERSPIN G3 SOFT & HARD】**

Art.No.: 30-009S / 30-009H

No need for speed glue. Speed glue used to help many table tennis players become the world champions, but for future players this is history. The new rules need new technologies and solutions. Giant Dragon's newly developed Durable Tension will be your choice.

- Durable Tension technology means that rubber undergoes special compression treatment for both durability and flexibility, using a special technique that fills and enlarges the pores of the sponge.
- The special treatment of the rubber's surface allows the rubber to better grip and throw the ball.
- The specially developed sponge, with improved internal energy technology generates better elasticity and rebound effect.

Spin 10.25

Speed 13.8

Thickness 1.8 / 2.0 / 2.2mm





GUARD is a latest Anti-loop rubber developed by Giant Dragon Company, a superb weapon against backspin. GUARD with the thin sponge brings perfect ball control.

**【GUARD】**

Art.No.: 30-006

Spin 3

Speed 5.7

Thickness 0.4/0.8mm



This new rubber is specially designed for VOC-free glue. Thanks to the technology of Trampoline Tension and Gecko Adsorption invented by Giant Dragon. With an appreciable improvement of speed and spin, it's not only suitable for the top players in the world, but also feasible for enhancing the skill of the beginners and secondary players.

**【KARATE HARD & SOFT】**

Art.No.: 30-002H / 30-002S

Spin 10

Speed 13.5

Thickness 1.8/2.0/2.2mm



This long pimple rubber is effective on attacking. It can neutralise opponent's attacking power and can create strange counter-hitting with unpredictable and changeable loops! It's recommended to players who pursue both attacking and defending!

**【METEORITE】**

Art.No.: 30-003

Spin 4

Speed 7

Thickness OX/0.5/1.0mm



The aspect ratio of this long pimple rubber is within ITTF regulations, whilst, we have formulated pimples whose shape and hardness react to the oncoming ball in an adequate extent. GIANT LONG is the best choice for attacking players who require a wide range of spin variation; defensive players who need to impart heavy backspin to the ball. It has the feature of a unique "knuckle ball" effect on shots, as well as producing effective speed for offensive shots.

**【GIANT LONG】**

Art.No.: 30-004

Spin 3.5

Speed 8

Thickness OX/0.5/1.0mm



8228A-FC is categorized as High Tension and fast speed, with its most power built-in, which enables you an amazing attack. This rubber also possess the better quality of controlling speed and spin.

**【8228A FIRST CLASS】**

Art.No.: 8228A-FC

Spin 7

Speed 11.5

Thickness 1.5/1.8/2.0/2.2mm



**【TAICHI HARD & SOFT】**

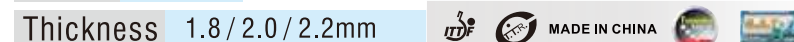
Art.No.: 30-001H / 30-001S

Thanks to own the unique shape of pimple, allows TAICHI with the features of outstanding spin and excellent attacking. The application of the special G.A.T technology to the rubber surface, makes the rubber grip the ball firmly. This kind of rubber is made from synthetic and natural rubber in proper proportion, and so we develop the Trampoline Tension Technology, it increases the power of rubber. Combined with the professional sponge developed by GIANT DRAGON. The player can get powerful performance with the using of VOC-free glue which is the same as the using of speed glue.

Spin 11.25

Speed 13

Thickness 1.8/2.0/2.2mm



Introducing the new Giant Dragon Blast pimple rubber, it is the combination of the "MET" & "TR. Tension II" tensor technologies. The Blast provides high speed and control shots. When combining heavy back spin, players are able to enjoy the balance of control and attack through this rubber. The Blast is also capable of strengthening the coordination of offensive and defensive plays; this would be the best weapon for fast-attack players.

**【BLAST】**

Art.No.: 30-015

Spin 6.8

Speed 11.75

Hardness 38°

Thickness 1.7/1.9/2.1mm



**【BLAST NATIONAL TEAM】**

Art.No.: 30-015NT

Spin 6.8

Speed 12.25

Thickness 2.15mm





FL [2015201]

ST [2015202]

backhand



**【KRIS 40+】**

This blade is a combination blade, special for new material 40+ table tennis ball. main wood is the balsa, it is hand picked, all good quality, different side with different speed and control.

**General description:**

\*Weighing around 65 grams and being about 13 mm thick, the blade is a combination blade with Forehand and Backhand sides that possess quite different characteristics.

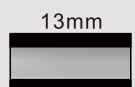
\*The forehand (OFF), providing high control and spin, and medium high speed.

\*The backhand (DEF) consists of a thick balsa ply and a very thin wooden outer ply providing low speed, high control, and high spin-reversal on soft to medium hard contact with the ball, but in contrast – due to the special catapult-effect of balsa – relative high speed, higher spin-reversal but less control on hard contact. The blade is overall relatively stiff and low-throw, producing a flat ball-trajectory, but its throw is slightly higher on soft contact and lower on hard contact.

**Suitability for styles:**

The KRIS40+ blade is purposely designed for a close to the table style featuring backhand blocking with long pimples-out rubber and forehand attack with an inverted or short pips-out rubber. However, its very controlled and slow backhand enables similar styles of play as well, styles with an emphasis on. Forehand attack and backhand control using inverted or short or medium pips, or a mix of them.

BLADE: 5 PLY WOOD  
OVER SIZE: 265x157mm  
TYPE: Forehand:OFF Backhand:DEF  
WEIGHT: 65g



FL [DK001FL]

ST [DK001ST]

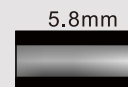


C-PEN [DK001CN]

**【DRAGON KING】**

The dragon king is the blade made by ALC, KIRI and KOTO, perfect combine. this blade offers the maximum blend of speed, heavy spin, and Control.

BLADE: 5 WOOD+2 ALC  
SIZE: 257x150mm  
TYPE: OFF  
WEIGHT: 85g





**【KRIS】**

It is a combination blade and very light weight blade made with balsa. The plies have been selected to produce a blade with the two sides of the blades at different speeds. The backhand is slower with more control and the forehand is faster.

BLADE: 5-PLYWOOD  
SIZE: REGULAR  
TYPE: OFF / DEFENSIVE  
WEIGHT: 82g



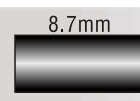
Forehand **SPEED 88** **CONTROL 90**  
backhand **SPEED 65** **CONTROL 96**



**【BALSA POWER】**

This balsa blade can offer an excellent control. The BALSAPower enables a dynamic offensive game with reversed rubbers or short pimples. The ball can be accelerated easily for both hitting and looping thanks to its balsa core. This blade also offers very good feeling for all passive strokes. It produces high spin reversal and fast attacking possibilities through aggressive pushing or lifting when used with Giant Dragon long pimples.

BLADE: 5-PLYWOOD  
SIZE: REGULAR  
TYPE: ALLROUND  
WEIGHT: 77g



**SPEED 82** **CONTROL 85**



**【BALSAdef】**

This balsa blade has been designed for all players defending away from the table. It is also very effective for short blocking close to the table, especially those players using long pimples and seeking a slow blade for maximum spinreversal will be enchanted by BALSAdef. It enables very safe and yet dangerous chopping thanks to its relatively slow speed.

BLADE: 5-PLYWOOD  
SIZE: REGULAR  
TYPE: DEFENSIVE  
WEIGHT: 76g



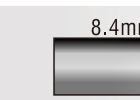
**SPEED 62** **CONTROL 95**



**【KRIS II】**

A good 5-ply blade for an active defense style (with forehand attack), or a combination players which with backhand blocking and forehand attack. It is a balsa blade, so give you a very light weight.

BLADE: 5-PLYWOOD  
SIZE: REGULAR  
TYPE: OFF / DEFENSIVE  
WEIGHT: 78g



Forehand **SPEED 88** **CONTROL 90**  
backhand **SPEED 64** **CONTROL 95**



**【KRIS CARBON】**

A good carbon blade for an active defense style, with forehand attack, for a combination players which with backhand blocking and forehand attack. It is a balsa blade, so give you a very light weight.

BLADE: 4-PLYWOOD + 1-CARBON  
SIZE: 257x150mm  
TYPE: OFF / DEF  
WEIGHT: 62g



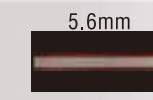
Forehand **SPEED 99** **CONTROL 88**  
backhand **SPEED 63** **CONTROL 93**



**【OVERIMAGINE-DEF】**

This blade is designed for choppers who seek powerful continuous offensive plays as well as wide range of well-spinned defensive play.

BLADE: 5-PLYWOOD  
SIZE: (LARGE) 265x157mm  
TYPE: DEF  
WEIGHT: 83g



**SPEED 70** **CONTROL 90**



**【SUPER BALSA CARBON】**

This Balsa blade with two CARBON, for the attacking players which with good control and light weight.

BLADE: 3-PLYWOOD + 2-CARBON  
SIZE: 257x150mm  
TYPE: OFF  
WEIGHT: 67g



**SPEED 110** **CONTROL 80**